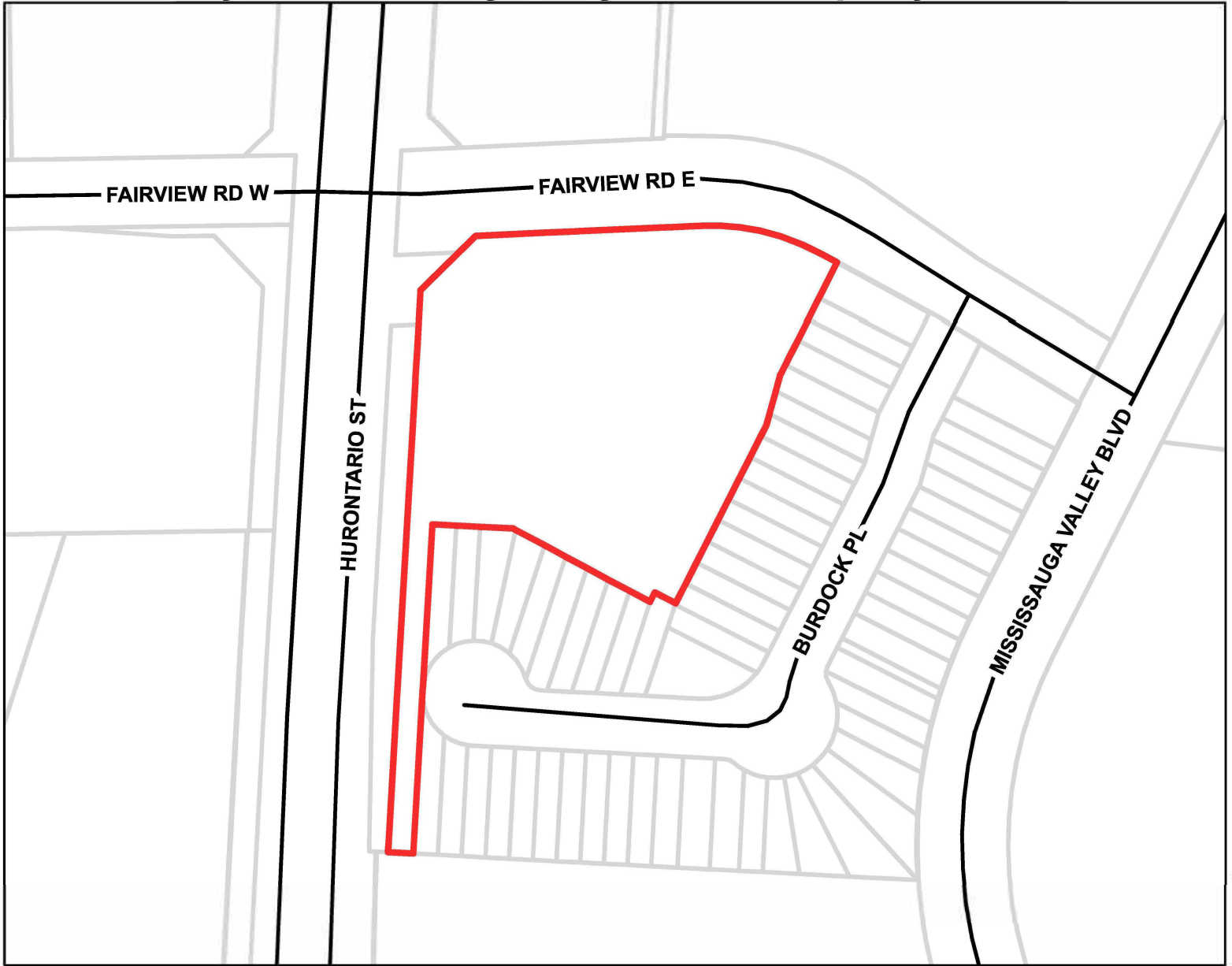


Part of Block A on Registered Plan M272, City of Mississauga, Regional Municipality of Peel



MAP NO. 335

Map filed at the office of the Ontario Ministry of Municipal Affairs and Housing, 777 Bay St., Toronto, Ontario,




Planning Act

Ontario Regulation: 92/23

Date: May 12, 2023

Original Signed By: Minister of Municipal Affairs and Housing

LEGEND

-  Land Subject to Zoning Order
-  Roads
-  Parcels



Map North (Degrees): 50°E

0 12.5 25 50

Metres

1 cm equals 17 metres

Map Description:

This is map no. 335 referred to in a Minister's Zoning Order. It shows lands which are located in, Part of Block A on Registered Plan M272, City of Mississauga, Regional Municipality of Peel.

We are committed to providing accessible customer service (<https://www.ontario.ca/page/accessible-customer-service-policy>). On request, we can arrange for accessible formats and communications supports. Please contact MMAH by email (mininfo@ontario.ca) for regulation details.

THIS IS NOT A PLAN OF SURVEY

Information provided by the Ministry of Municipal Affairs and Housing, under licence with the Ministry of Natural Resources. © King's Printer for Ontario, 2023.