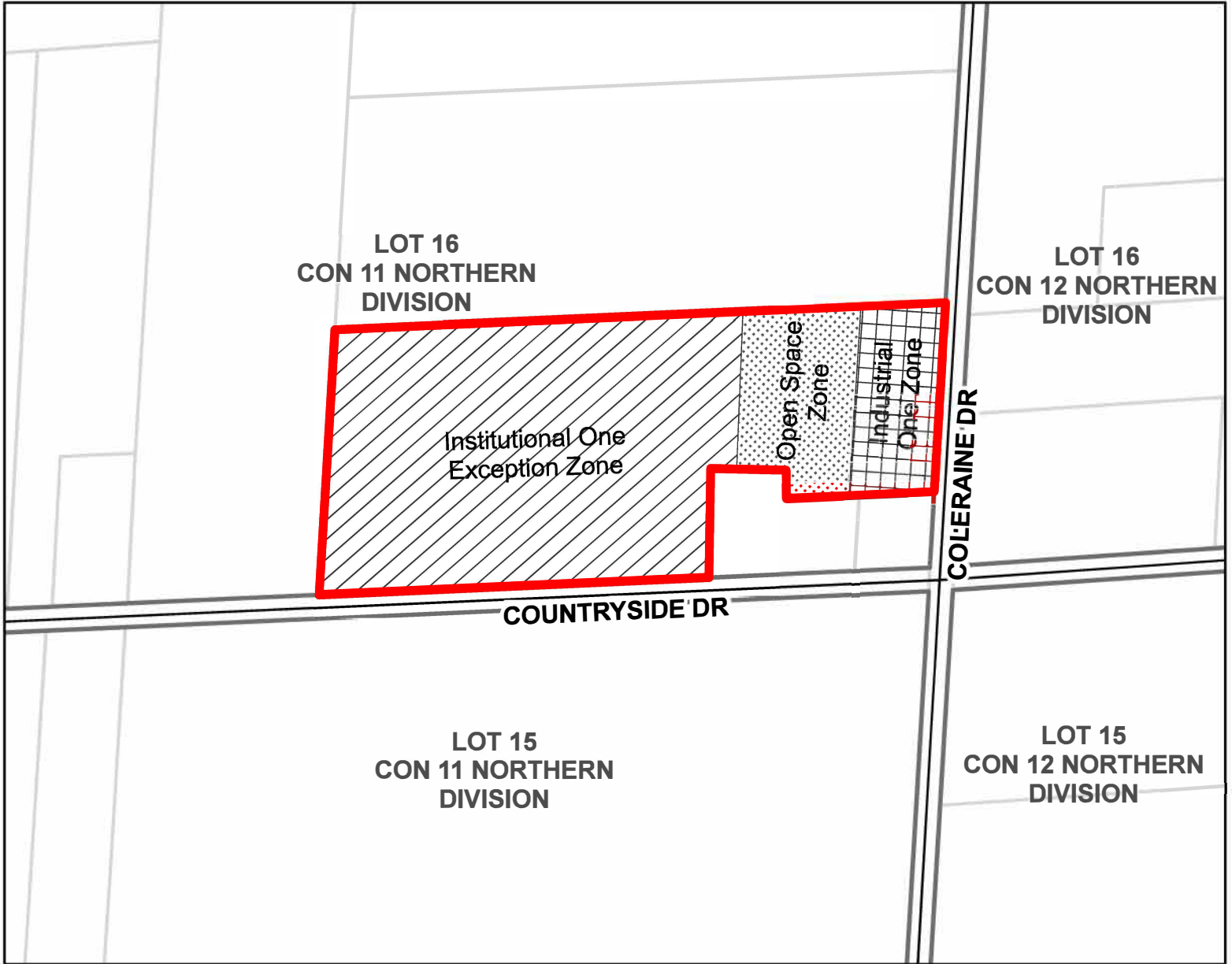


Part of Lot 16, Concession 11, Northern Division,
City of Brampton, Regional Municipality of Peel



MAP No. 288

Map filed at the office of the Ontario Ministry of Municipal Affairs and Housing, 777 Bay St., Toronto, Ontario,







Planning Act

Ontario Regulation: 38/22

Date: January 28, 2022

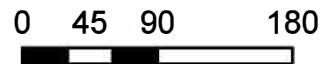
Original Signed By: Minister of Municipal Affairs and Housing

LEGEND

-  Land Subject to Zoning Order
-  Industrial One Zone
-  Institutional One Exception Zone
-  Open Space Zone
-  Roads
-  Parcels



Map North (Degrees): 49° E



Metres

1 cm equals 50 metres

Map Description:

This is map no. 288 referred to in a Minister's Zoning Order. It shows lands which are located in, Part of Lot 16, Concession 11, Northern Division, City of Brampton Regional Municipality of Peel. We are committed to providing accessible customer service (<https://www.ontario.ca/page/accessible-customer-service-policy>). On request, we can arrange for accessible formats and communications supports. Please contact MMAH by email (mininfo@ontario.ca) for regulation details.

THIS IS NOT A PLAN OF SURVEY

Information provided by the Ministry of Municipal Affairs and Housing, under licence with the Ministry of Natural Resources.

©2021, Queen's Printer for Ontario.