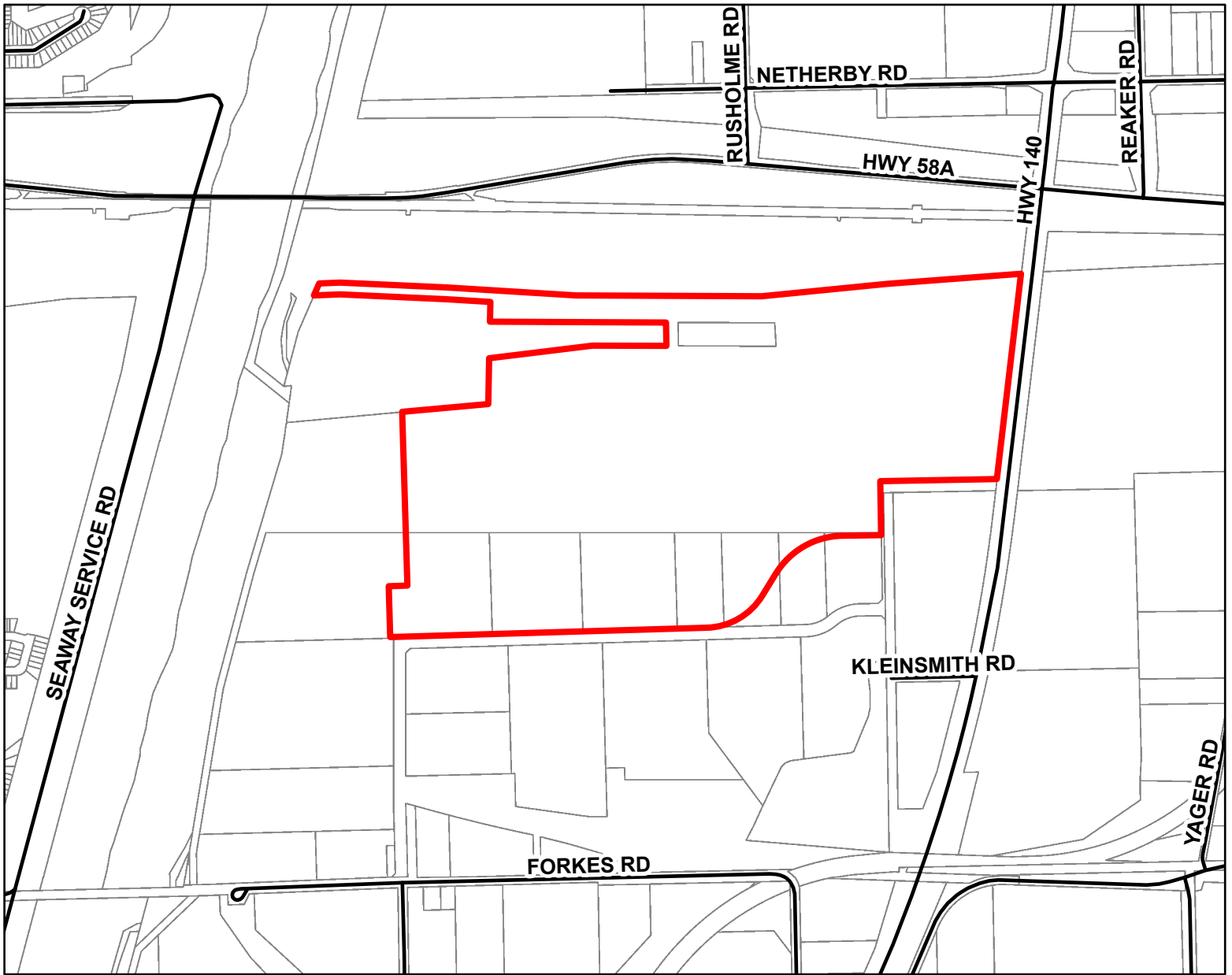


Part of Lots 16-19, Concession 5, Humberstone, City of Port Colborne



LEGEND

- Roads
- ▭ Proposed Lands
- ▭ Parcels



Map North (Degrees): 0°

0 120 240 480



Metres

1 cm equals 126 metres

THIS IS NOT A PLAN OF SURVEY



Information provided by the Ministry of Municipal Affairs and Housing,
under licence with the Ministry of Natural Resources.

© King's Printer for Ontario, 2024.