



October 7, 2022

Ministry of Municipal Affairs and Housing
777 Bay Street
Toronto, ON
M7A 2J3

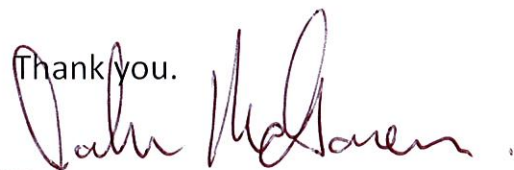
RE: Region of York Official Plan (ERO #019-5865)

Good Morning,

I am writing on behalf of Meadowbrook Golf and Country Club Association (150 ac. +/-) and Warden North GP Inc. (50 Ac. +/-) owners of **Whitebelt Lands** in the community of Whitchurch Stouffville as highlighted on attached Map 1B Urban System Overlays from the adopted York Region Official Plan 2022.

Notwithstanding the **Whitebelt Lands** are referred to as Future Urban Area, we have participated through the York Region Official Plan process with our neighbours to have these lands, and other bonafide whitebelt lands, brought into the urban boundary at this time. For your information the associated correspondence has been registered through the Environmental Registry of Ontario as Comment ID # 61620.

Our request of the Ministry at this time is to have our **Whitebelt Lands** designated as Community Area when they are brought into the urban boundary. As Community Area these lands can be brought into active service in the short term and provide valuable housing stock to assist with the growing shortfall of attainable housing. As Employment Lands their development potential is uncertain. Case in point, Official Plan Amendment 88, the Gormley Industrial Secondary Plan, was approved by the OMB in 1995 and today, 27 years later, over 60% of those lands remain undeveloped. We believe these **Whitebelt Lands** are part of the housing solution the Ministry is working very hard to find and hope that our request will be given due consideration.

Thank you.


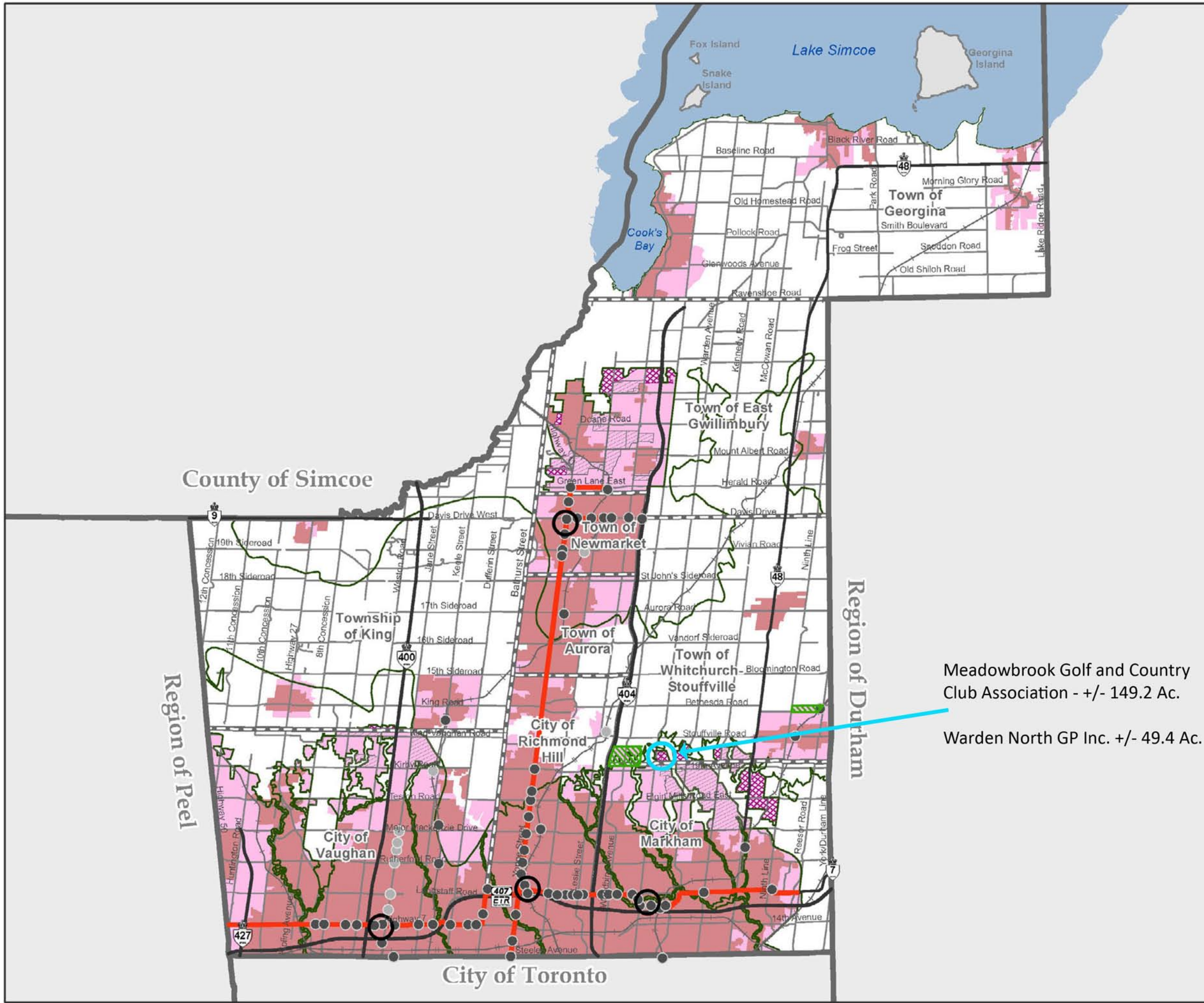
John McGovern
Senior Vice President, Policy and Planning

MAP 1B

URBAN SYSTEM OVERLAYS

- Regional Centre
- Regional Corridor
- Protected Major Transit Station Area
- Major Transit Station Area
- Built Up Area
- Future Urban Area
- Greenbelt Plan**
- Greenbelt Plan Boundary
- Designated Greenfield Area**
- Designated Greenfield Area
- New Community Area
- Provincial Highways**
- Existing
- Municipal Boundaries**
- Regional Municipal Boundary
- Local Municipal Boundary
- Area within ORMCP conditional upon amendments to Ontario Regulation 140/02¹

¹Urban designations are conditional upon amendments to the ORM designations prior to adoption of the ROP.



Meadowbrook Golf and Country Club Association - +/- 149.2 Ac.

Warden North GP Inc. +/- 49.4 Ac.

0 2 4 6 8 10
Kilometres

Produced by: The Regional Municipality of York
 Planning and Economic Development Branch, Corporate Services Department, 2022.
 Data: The Regional Municipality of York, The Regional Municipalities of Durham and Peel,
 County of Simcoe, City of Toronto
 Queen's Printer for Ontario 2003-2022, Includes Greenbelt and Oak Ridges Moraine
 Boundaries and Water Features
 Based on best available data and may contain minor errors or omissions.