
Stovel and Associates Inc.
Planners, Agrologists and Environmental Consultants

December 02, 2022

Greenbelt Consultation
Ministry of Municipal Affairs and Housing

RE: ERO No. 019-6217 – Proposed Amendments to the Greenbelt Area Boundary Regulation – Request to Address Mapping Error – City of Hamilton Greenbelt Deletion (Map 10)

Stovel and Associates Inc. (“SAI”) is retained by the 1231 Shantz Station Inc. to review the Proposed Amendments to the Greenbelt Area Boundary Regulation. Please accept these comments on behalf of my client.

The proposed modification to the Greenbelt is a reasonable land use consideration, especially given the desperate need for housing in the City of Hamilton and the Greater Golden Horseshoe.

We do note however, on the ERO website: <https://ero.ontario.ca/notice/019-6217>, an inconsistency with the proposed mapping when compared to the text description for Map 10.

The Area/Location is described as “*Land located in the City of Hamilton south of White Church Road East, west of Miles Road, north of Chippewa Road East, east of Upper James Street.*” Map 10 does not extend to Miles Road and only extends to Ferris Road. Map 10 requires a minor edit to be consistent with the text description.

To assist you, we have included a copy of what the revised mapping that addressed this matter.

Yours truly,



Robert P. Stovel, M.Sc., M.C.I.P., R.P.P., P. Ag.

cc. Hannah Evans, Assistant Deputy Minister MMAH
Steve Schiedel, Greenhorizon’s Group of Farms Ltd.
Jeff Wilker, Thomson Rogers

MAPPING ERROR

Greenbelt Plan, Oak Ridges Moraine Conservation Plan




Maps are for Consultation Purposes Only

Proposed Modifications Map 10

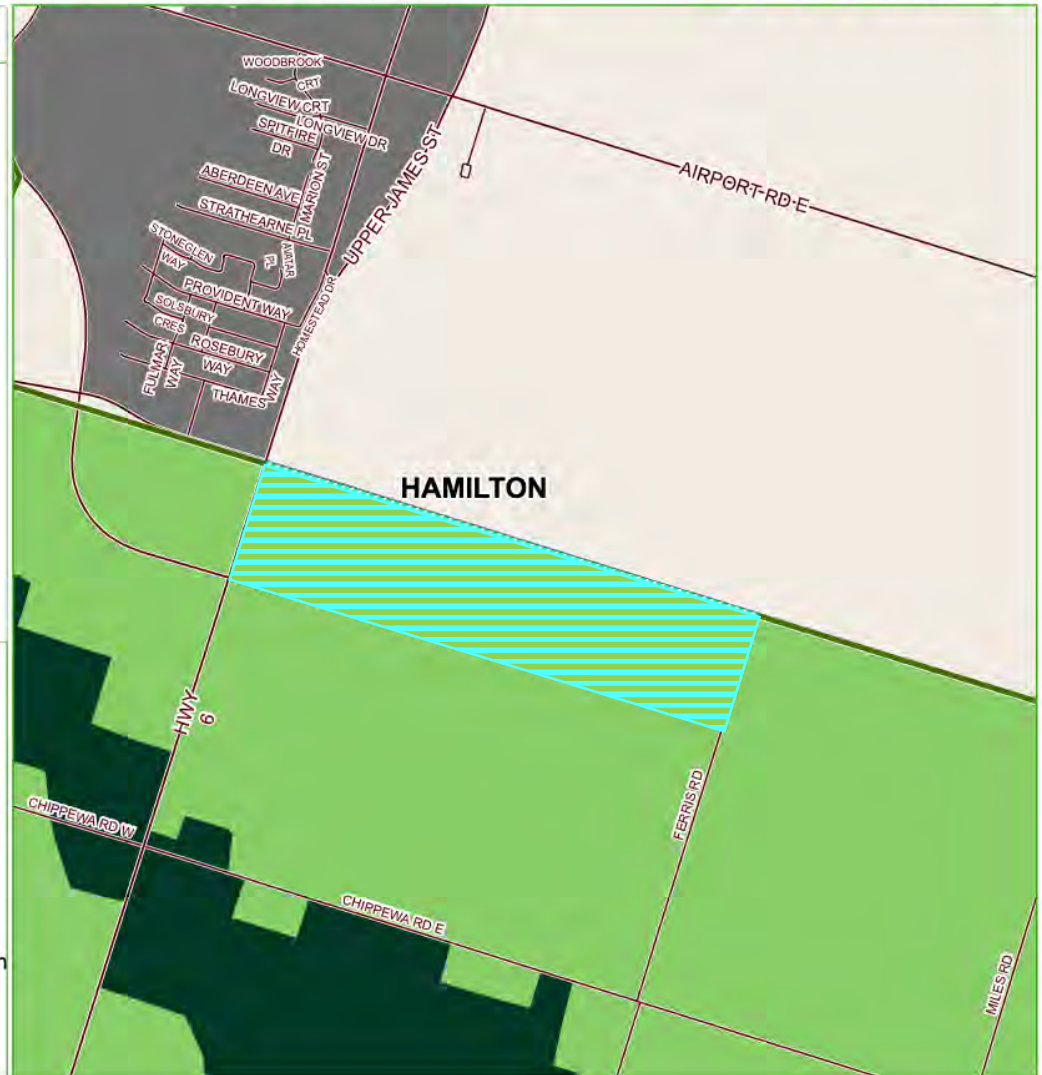
LEGEND

Ontario 

-  Greenbelt Area*
-  Protected Countryside
-  Natural Heritage System
-  Towns/Villages
-  Urban River Valleys
-  Settlement Areas Outside the Greenbelt
-  Municipal Boundary
-  Road or Highway

- ### Proposed Modifications
-  Greenbelt Redesignation
 -  Greenbelt Removal
 -  ORM Redesignation

0 0.13 0.25 0.5 Km
1 cm equals 178 m



Note: While every effort has been made to accurately depict the information, this map should not be relied on as being a precise indicator of locations of features or roads. For precise boundaries and locations of Settlement Areas, including Towns/Villages and Hamlets, the appropriate municipalities should be consulted.

Produced by and using data sources from the: Ministry of Municipal Affairs and Housing; Ministry of Northern Development, Mines, Natural Resources and Forestry; Ministry of the Environment, Conservation and Parks; and, the Ministry of Agriculture, Food and Rural Affairs.

<https://www.ontario.ca/page/accessible-customer-service-policy>
We are committed to providing accessible customer service. On request, we can arrange for accessible formats and communications supports. Please contact MMAH by email (mininfo@ontario.ca) for regulation details.

*Ontario Regulation 59/05, as amended. © 2022, King's Printer for Ontario

CORRECT MAPPING PER DESCRIPTION OF REGULATIONS

Greenbelt Plan, Oak Ridges Moraine Conservation Plan




Maps are for Consultation Purposes Only

Proposed Modifications Map 10

LEGEND

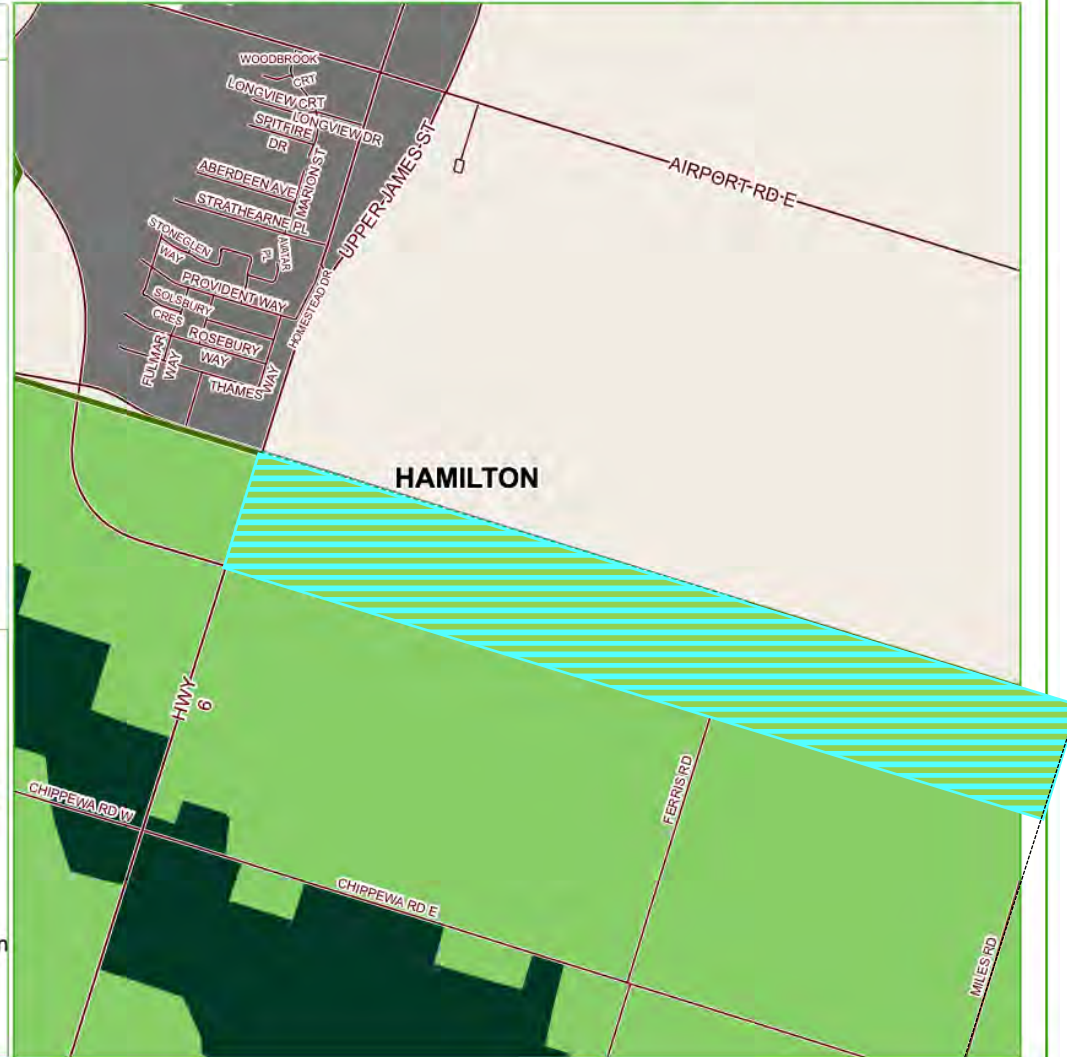
Ontario

-  Greenbelt Area*
-  Protected Countryside
-  Natural Heritage System
-  Towns/Villages
-  Urban River Valleys
-  Settlement Areas Outside the Greenbelt
-  Municipal Boundary
-  Road or Highway

- Proposed Modifications
-  Greenbelt Redesignation
 -  Greenbelt Removal
 -  ORM Redesignation

0 0.13 0.25 0.5 Km
1 cm equals 178 m

Map North: 0°



Note: While every effort has been made to accurately depict the information, this map should not be relied on as being a precise indicator of locations of features or roads. For precise boundaries and locations of Settlement Areas, including Towns/Villages and Hamlets, the appropriate municipalities should be consulted.

Produced by and using data sources from the: Ministry of Municipal Affairs and Housing; Ministry of Northern Development, Mines, Natural Resources and Forestry; Ministry of the Environment, Conservation and Parks; and, the Ministry of Agriculture, Food and Rural Affairs.

<https://www.ontario.ca/page/accessible-customer-service-policy>
We are committed to providing accessible customer service. On request, we can arrange for accessible formats and communications supports. Please contact MMAH by email (mininfo@ontario.ca) for regulation details.

*Ontario Regulation 59/05, as amended. © 2022, King's Printer for Ontario