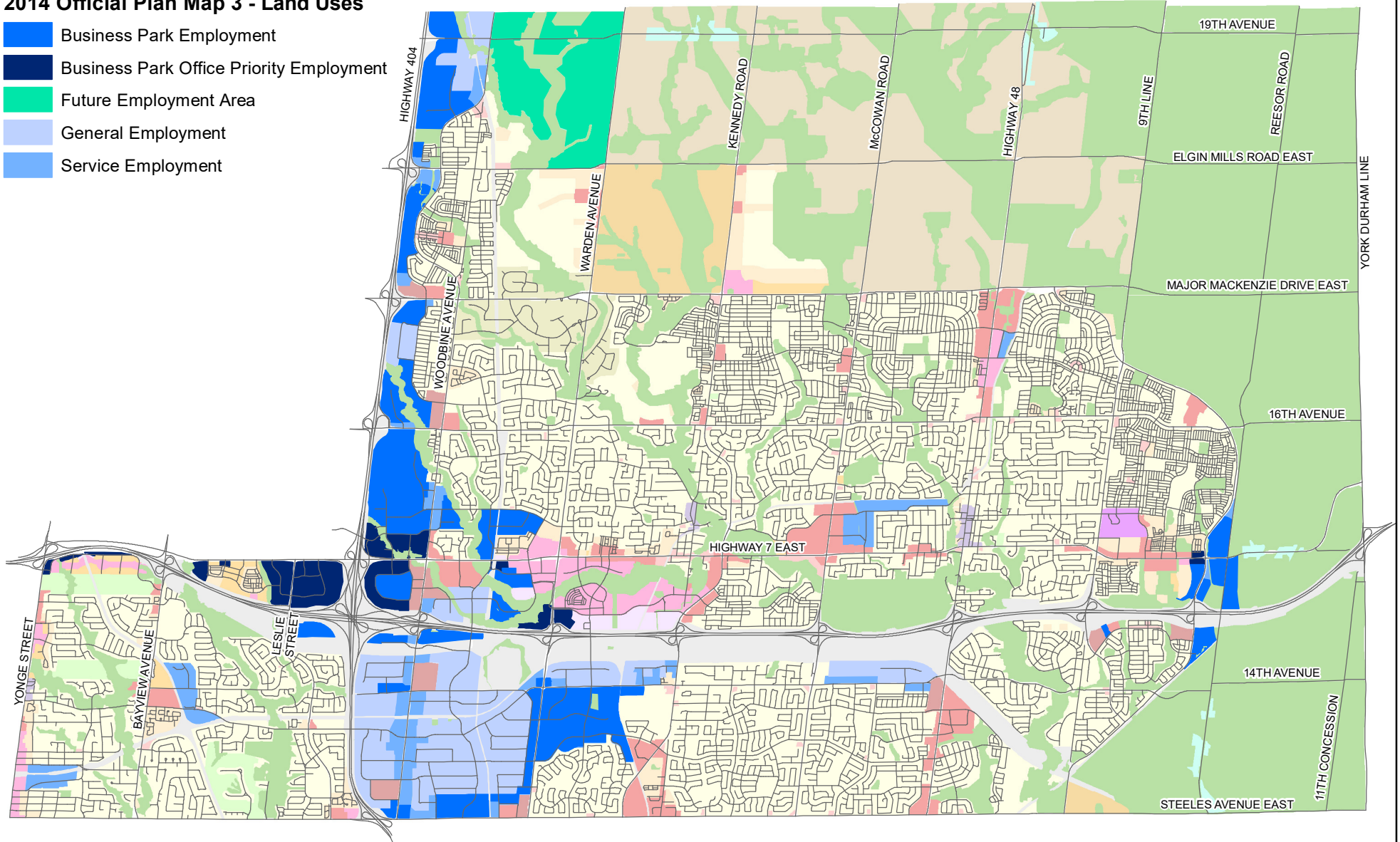


2014 Official Plan Map 3 - Land Uses

- Business Park Employment
- Business Park Office Priority Employment
- Future Employment Area
- General Employment
- Service Employment



Q:\Geomatics\Departments\Planning\Policy\Lilly Ann\Bill 97\Report Figures.mxd

EMPLOYMENT AREA (2001.16 ha.)
 BUSINESS PARK OFFICE PRIORITY EMPLOYMENT (163.58 ha.)

